

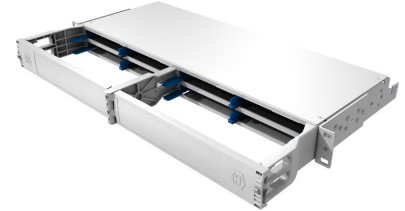
IANOS Lite Chassis

Description

IANOS lite standard chassis, with front door, for up to 8 IANOS module, 1U, grey
IANOS-LITE-STANDARD-T4

Features

- Subrack for up to 8 modules / 48 x ports (LC-duplex, SC Simplex/ MTP) per 1U height space
- Quick and simple installation of subrack, modules and cables
- Insertion of single and double modules from the rear and front
- Easy access and protection of ports through horizontal opening front-door (Optional)
- Fixed tray design
- Labelling within front-door or as a slide-out system
- Compatible to all double or single IANOS modules
- Available as standard, skeleton and central cable management configuration



Technical data

Mechanical data

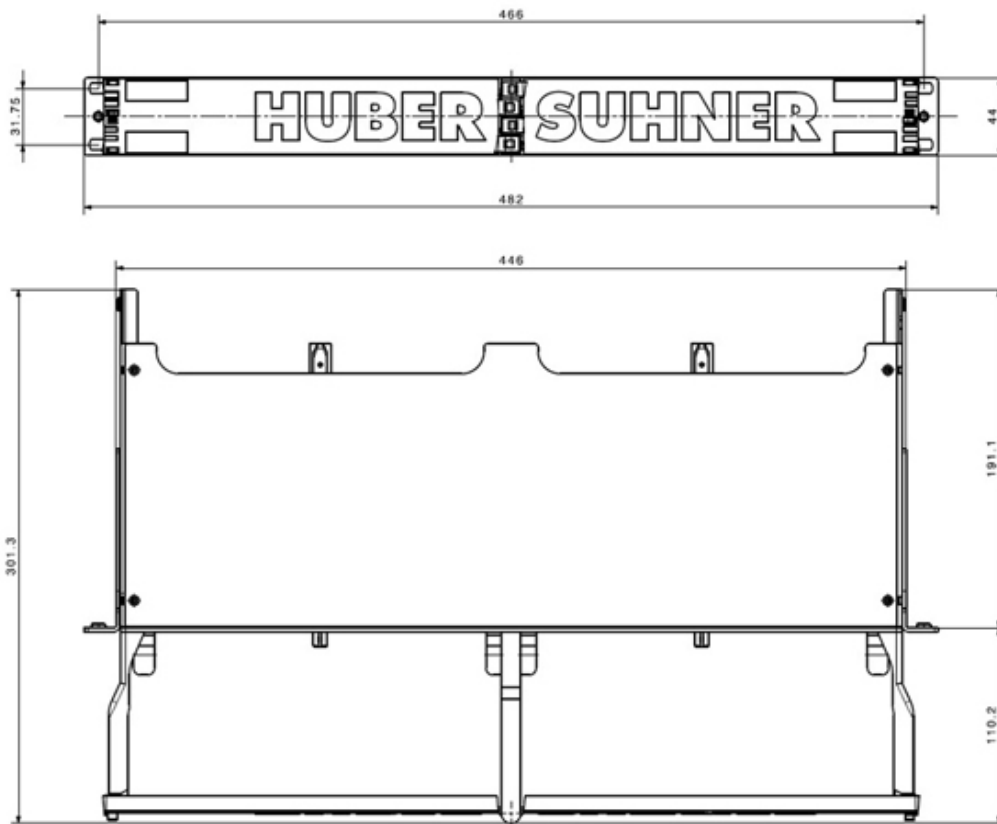
Characteristics	Values
Product family	IANOS
Suitable for	IANOS Modules
Dimension (Width x Length x Height) (mm)	482 x 301.3 x 44
Dimension (Width x Length x Height) (inch)	19 x 11.9 x 1.7
Rack height (U)	1
Weight (kg)	1
Weight (lbs)	2.2
Material chassis	steel
Colour chassis	telegrey 4 (RAL 7047)
Capacity of modules (pcs)	8
Compatibility	EDR
Mounting Type	Front mounting

Environmental data

Characteristics	Values
Free of halogen	Yes
RoHS compliant	Yes
REACH compliant	Yes

IANOS Lite Chassis

Technical drawing



Ordering information

Description	Item number
IANOS lite standard chassis, with front door, for up to 8 IANOS module, 1U, grey	85086220

Related Documents

Installation manual	DOC-0000780764
---------------------	----------------